

CERTIFICATE OF LOCATION OF GOVERNMENT CORNER

NORTH QUARTER Corner of Section 7, Township 106 N., Range 42 W., 5th P.M.

STATE OF MINNESOTA, County of MURRAY

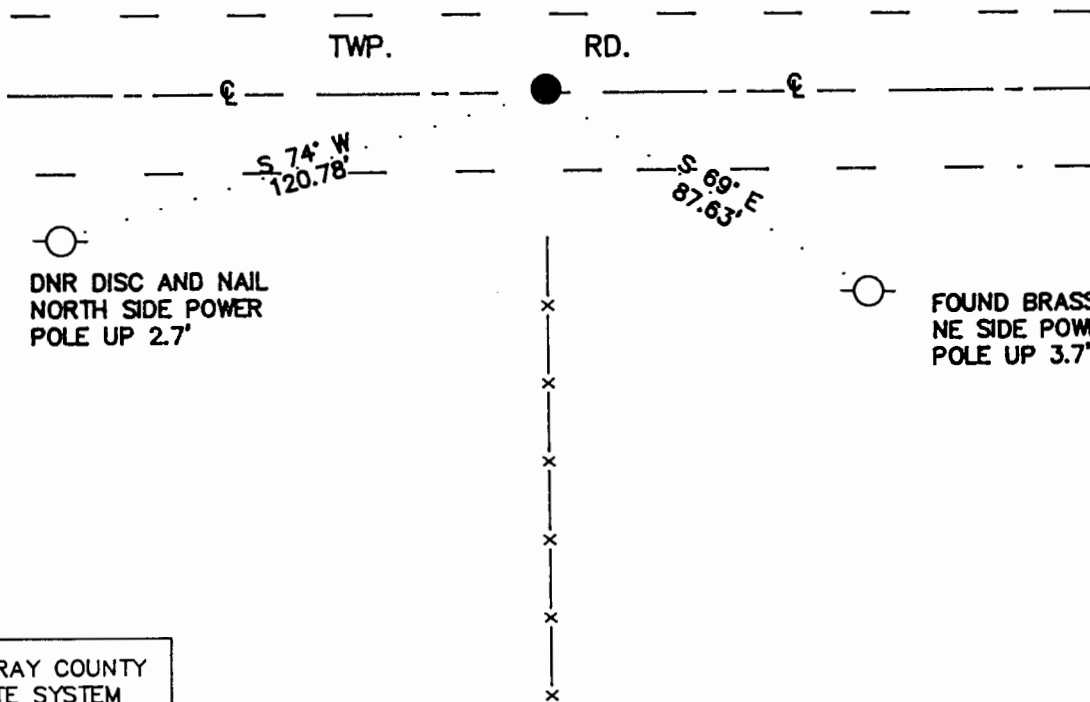
At the corner location shown on the sketch:

On 5/3/89 found a IRON ROD, DOWN 0.6' WITH RLS#12967 ON CAP
DATE

left monument as found, lowered monument, removed monument (explain)

On _____ Placed a _____
DATE

SKETCH OF REFERENCE TIES



1983 MURRAY COUNTY
COORDINATE SYSTEM
N=158321.169
E=456040.309

BEARINGS OBSERVED WITH COMPASS

Statement of evidence relative to this corner location is on back of page.

7/12/89
G-1225

I hereby certify that this document and the data contained herein was prepared by me or under my direct supervision.

Lowell R. Pommeroy 7-21-89
SIGNATURE DATE

Registration No. 17005
 Land Surveyor, Professional Engineer
 County Surveyor, County Engineer

OFFICE OF THE COUNTY RECORDER
County of Murray

I hereby certify that this document was filed in the Co. recorders office at 10:00 AM. on the 24th day of July A.D., 1989

County Recorder James V. Johnson
By _____, Deputy

DOCUMENT NO. _____

North Quarter Corner of Section 7, Township 106 North, Range 42 West

The DNR Bureau of Engineering contacted the following offices for survey information:

MN Secretary of State's Office
Murray County Offices of the Recorder and Highway Engineer
Mn/DOT Office in St. Paul
Mn/DOT Office in Willmar
Sioux Engineering, Inc., Office in Windom
Madsen Land Surveying Office in Fairmont
Bell Surveying, Inc., Office in Worthington
Lyle Moseng and Associates Office in Marshall

- 1866 U.S. General Land Office notes obtained from the Secretary of State's Office show the corner marked with a post in mound.
- 1887 Surveyor's Record Book A, on page 39, obtained from the County Recorder's Office contains a survey, surveyor not indicated. Survey shows corner but does not indicate what was found or set. No distances are shown to corner, however, survey does show a distance of 2637.7 feet from the north quarter corner of Section 18 to the center of Section 7. A description of a monument at the center of Section 7 is not given.
- 1981 Field notes, worksheets, and a certificate of survey by Gary D. Martin, RLS #12967, obtained from Madsen Land Surveying show that a 7 foot north-south by 10 foot east-west by 6 foot deep hole was dug in area of corner. The center of hole was on the center line of an east-west road in line with a fence south. In digging, clay was encountered at a depth of 6 feet and a monument was not found. Corner was established on the center of road and in line with fence south. A 1/2" rebar with a cap was set to mark corner and the following ties are shown to it:
- 2627.59 feet from the northeast corner of Section 7
 - 2630.64 feet from the northeast corner of Section 12
 - fence line fits within 1.0 feet of split
 - brass tag in telephone pole, S. 72° E., 87.68 feet
 - brass tag in brace pole, S. 4° E., 39.25 feet
 - brass tag in brace pole, S. 13° W., 33.86 feet
- 1989 The DNR Bureau of Engineering conducted a search for this corner and found a 1/2" iron rod with plastic cap stamped "RLS #12967" down 0.6 feet. Iron rod was found to measure:
- 1.0 ft. south of center line east-west road
 - in line with fence south
 - 2627.51 ft. from the northeast corner of Section 7
- Searched for and found record ties, but two were in unstable brace posts.

Analysis of the available information led the DNR Bureau of Engineering to conclude that the found iron rod marks the location of the corner.